

## Product Name

Fortuna Silk Luxury Interior Finish Semi-Gloss & Low Sheen

## Product Description

Fortuna Silk Luxury Interior Finish Semi-Gloss & Low Sheen is technologically most advanced paint, premium quality water based paint which provides smooth and luxurious finish.



## Product benefit



**Green Assure:** The promise of Green Assure from APCO Coatings, implies that this product conforms to strict International Environmental and Safety Standards.



**Excellent Stain Resistant:** Fluoride additive fortifies your walls against tough stains, increases durability and reinforces the strength of the paint film. Special additives has enhanced stain resistance that protects your wall for all kind of stains.



**Sheen Variants:** Product is available in semi-gloss & low sheen that enhance radiance on the walls making your home more attractive.



**Pleasant Odour:** Low VOC paint and absence of any harmful chemical results in very low odour. Addition of special additive imparts pleasant odour after painting.

## Product features

Washability	High
Available Packs	1Lit, 4 Lit, 10 Lit, 20 Lit
Finish	Very Smooth - Semi-Gloss / Low Sheen
Coverage	14-16 Sqm/lit/coat* *Actual coverage may vary from the quoted coverage due to factors such as method and condition of application and surface roughness and porosity.
Colour Options	APCO 1320 Colours

## Areas of Application

The areas of application are wallboard, drywall, concrete, plaster, cement render, paper faced plaster board, timber and hardboard.

# How to Apply

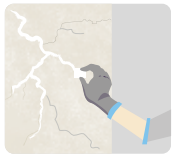
## Pre Painting Steps



**PLASTER:** New masonry surfaces must be allowed to cure completely. It is recommended to allow 28 days as the curing time for new masonry surfaces.



**CLEANING:** Surface should be free from any loose paint, dust or grease. Growths of fungus, algae or moss should be removed by wire brushing and water. In case of areas having excessive dampness use Asian Paints Damp Block to limit further dampness. When the underlying surface exhibits chalkiness, in spite of thorough surface cleaning, use APCO Coatings Exterior Sealer.



**FILLING FOR CRACKS:** For filling cracks use APCO Coatings Interior/ Exterior wall putty.



**FILLING FOR HOLES & DENTS:** Use APCO Coatings Interior/ Exterior Putty or white cement and fine sand in the ratio 1:3.

For interior surfaces or substrates that are subjected to continuous seepage or dampness, kindly use APCO Coatings SmartCare Damp Block before the top coat application.

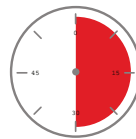
## Paint Application / System

Step - 1: Surface preparation.

Step - 2: Primer Application - Apply Sureprep Acrylic Interior Exterior Acrylic Sealer as per PDS.

Step - 3: Two coats of Fortuna Silk with an interval of 3-4 hrs.

## Drying Time



Touch Dry	30 Min
Recoating Time	3-4 hrs

## Finish - Type / Category

Interior Ultra-Premium wall finish.

## Additional Information

Gloss level @ 60°	Semi-Gloss - 25-35 Unit Low Sheen - 8-12 unit
Method of application	Brush, Roller and Spray
Flammability	Non Flammable
Safety Precautions	<ul style="list-style-type: none"> <li>Do not apply when surface temperature is below 10°C.</li> <li>Provide adequate ventilation during use.</li> <li>Keep out of reach of children.</li> <li>Check cross cut adhesion of old paint before repainting.</li> <li>In normal condition, a week's curing is required to develop full hardness &amp; resistant properties.</li> <li>Avoid exposure of new paint film to steam for 48 hours and to washing and scrubbing for 7 days.</li> </ul>

### DISCLAIMER:

Although the facts and suggestions in this publication are based on our own research and are believed reliable, we cannot assume any responsibility for performance or results obtained through the use of our products herein described, nor do we accept any liability for loss or damages directly caused by our products. The user is held to check the quality, safety and all other properties of our product prior to use. Nothing herein is to be taken as permission, inducement or recommendation to practice any patented invention without a license.

	<b>FACTORY:</b> P.O. Box 694, Lautoka, FIJI. Ph: 679 6662799; Fax: 679 - 6663959 Email: contact.fiji@apcocoatings.com	<b>SUVA OFFICE:</b> P.O. Box 4202, Samabula, Suva, FIJI. Ph : (679) 3371267/68; Fax: (679) 3371269 Email: contact.fiji@apcocoatings.com
---	--	--